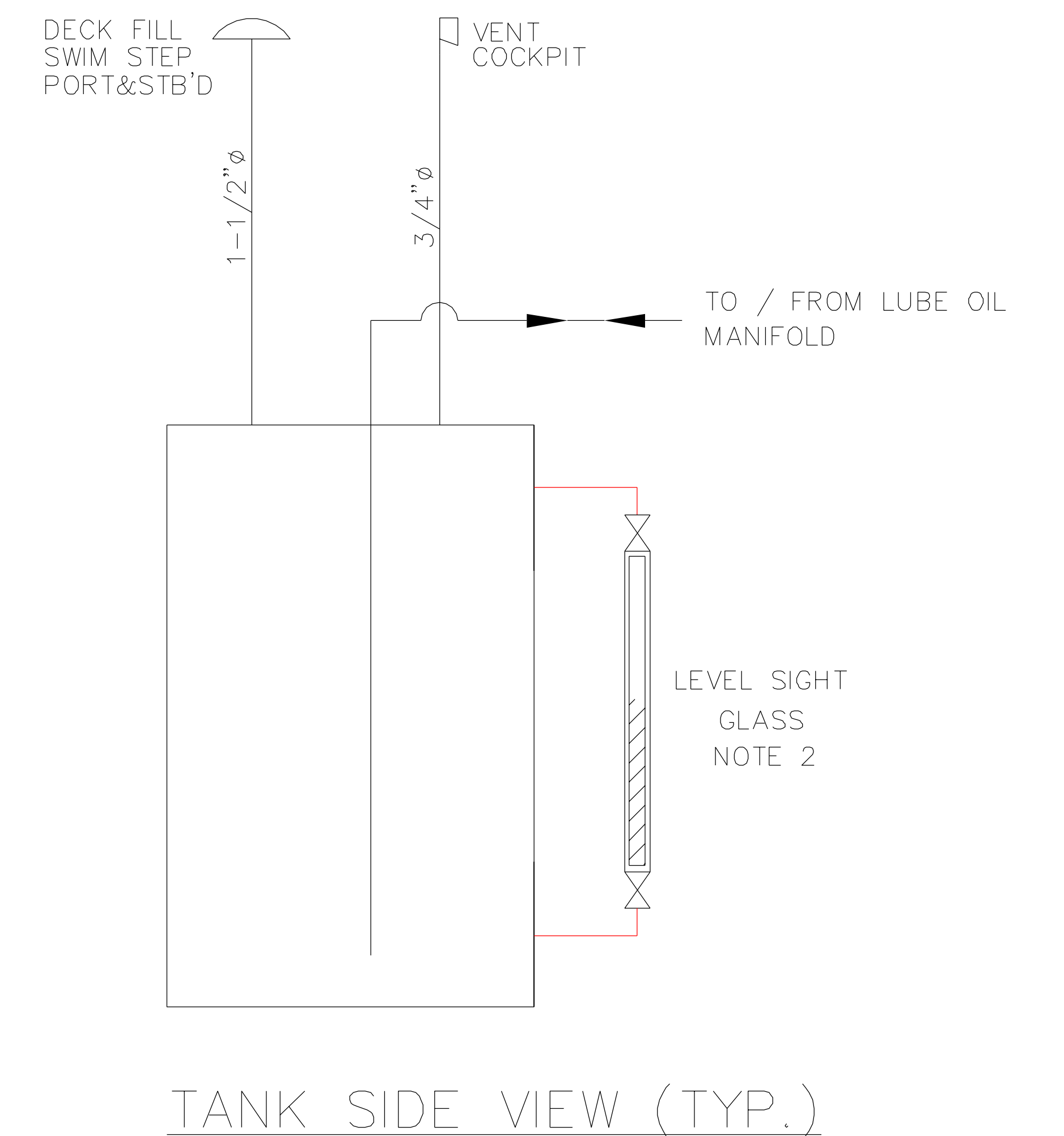
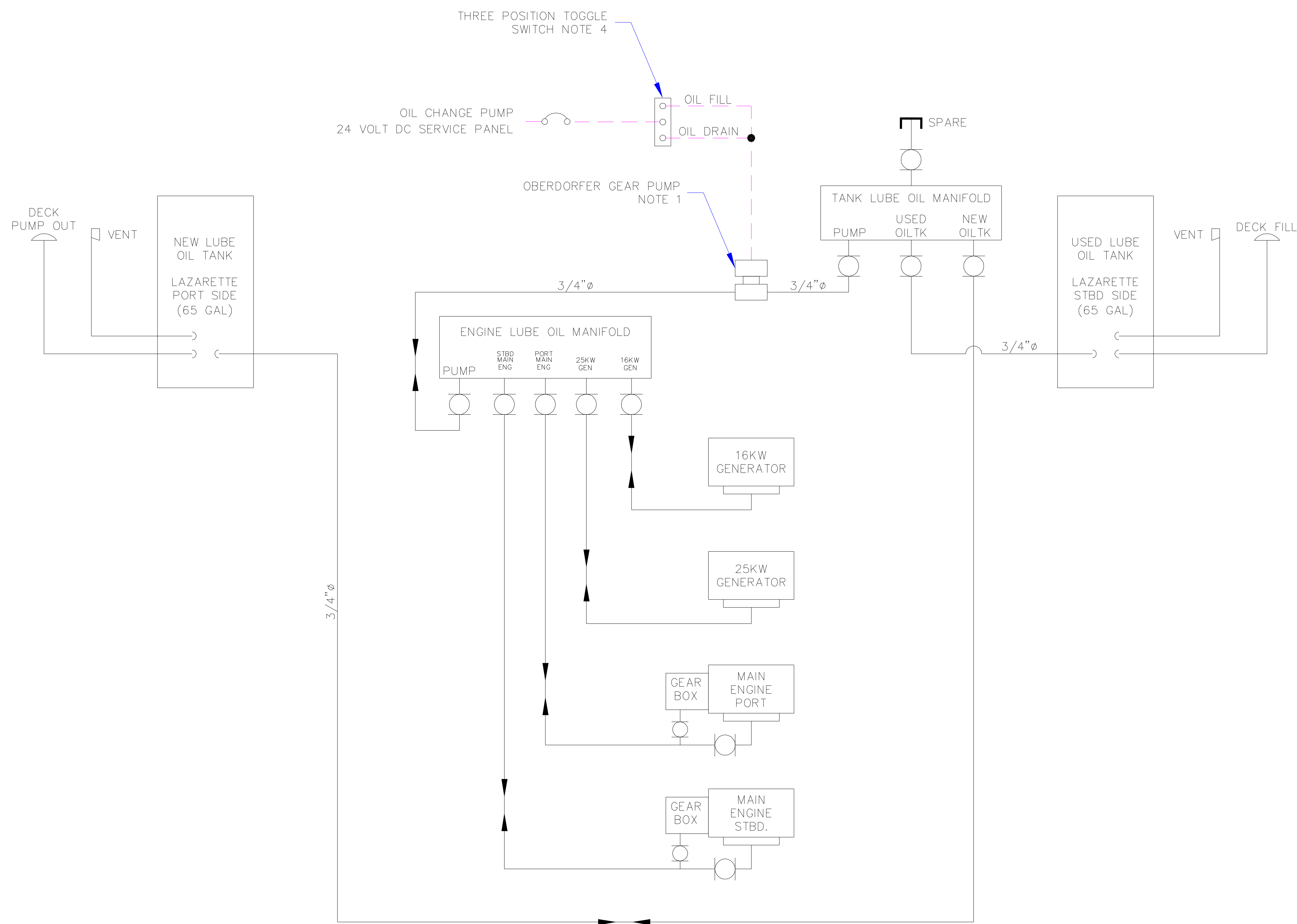


REVISIONS			
REV	DESCRIPTION	DATE	REV BY
0	INITIAL ISSUE		



NOTES:

1. OBERDORFER REVERSIBLE FLOW GEAR PUMP MODEL #N993-N-F36-RC MOUNTED PORT SIDE OF MAIN ENGINE.
2. TANK LEVEL SIGHT GLASS WITH INTEGRAL ISOLATION VALVES MOUNTED ON OIL TANKS, PORT AND STARBOARD SIDES, AFT END OF LAZARETTE.
3. OIL MANIFOLDS ARE LOCATED ON ENGINE ROOM BULKHEAD PORT SIDE.
4. START AND STOP OIL CHANGE PUMP USING THREE POSITION TOGGLE SWITCH. LEAVE SWITCH IN MID (STOP) POSITION. SWITCH IS LOCATED ON BULKHEAD (E/R) PORT SIDE.
5. ALL LINES ARE 1/2" UNLESS OTHERWISE SPECIFIED.

NORDHAVN 68 USED OIL / NEW LUBE OIL SYSTEM

PACIFIC ASIAN ENTERPRISES

PO BOX 874, AT-THE HARBOR, DANA POINT, CALIFORNIA 92629
PH (949)496-4848 FAX (949)240-2398

SIZE B	PRJ. NO. N6805	DWG. NO. N68UOS-6805	DWG. NM
SCALE: NTS	DATE: SEE ABOVE	REV: SEE ABOVE	SHEET: 1 OF 1