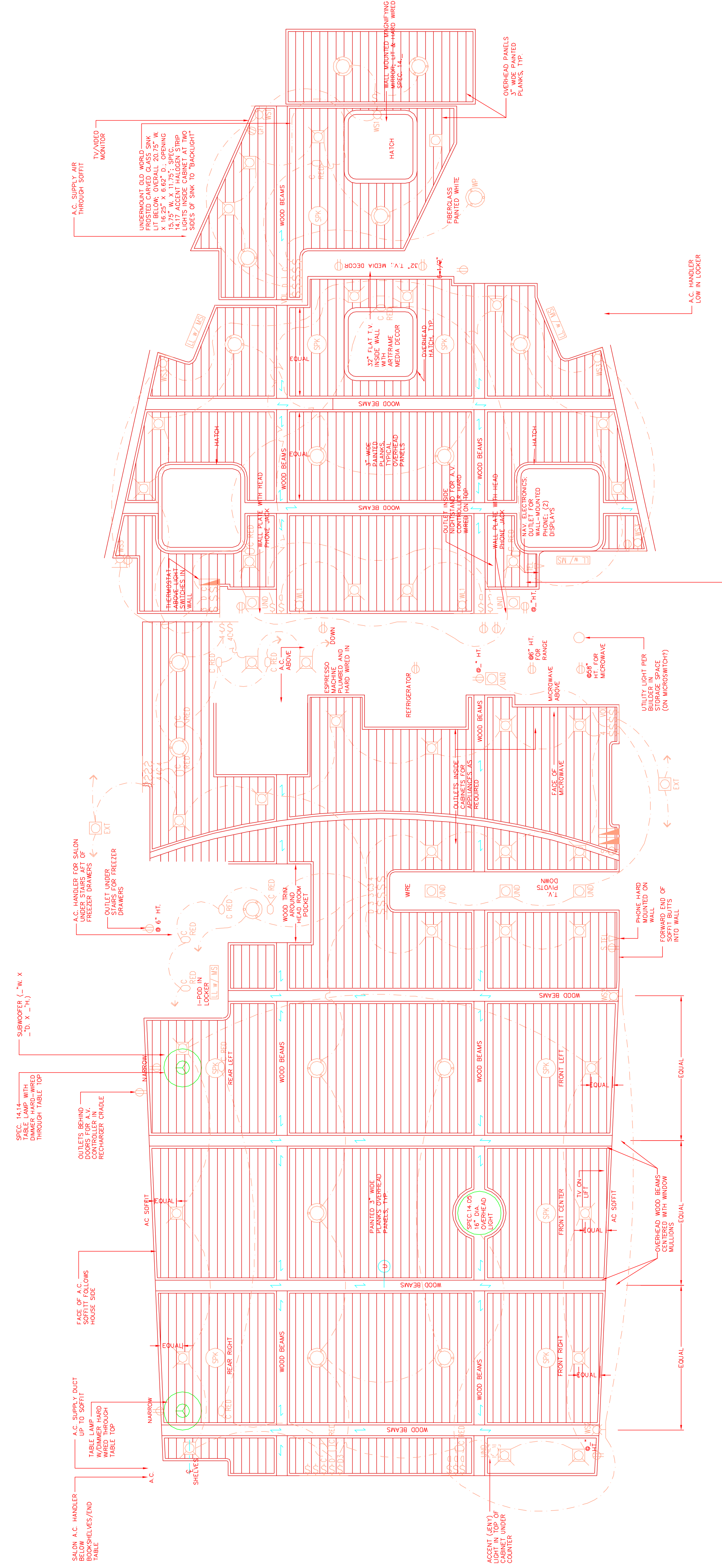
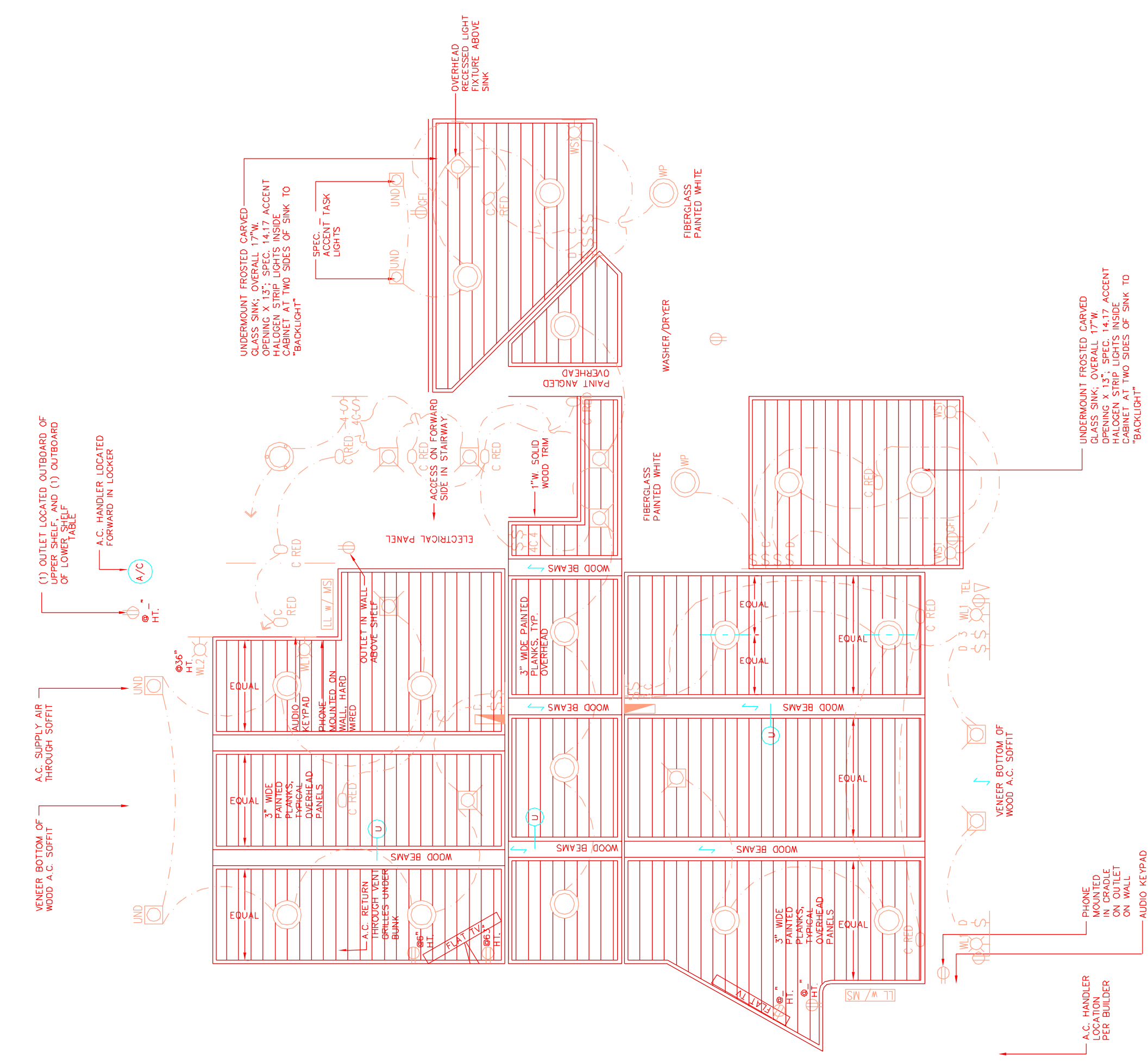


WHEEL HOUSE LEVEL PLAN
1/2\"/>



MAIN LEVEL PLAN
1/2\"/>



LOWER LEVEL PLAN
1/2\"/>

ELECTRICAL LEGEND

○	OVERHEAD RECESSED LIGHT W/SCREWS, SPEC 14.01	□	OVERHEAD RECESSED SPOT LIGHT, SPEC 14.20 US	○	SWITCH FOR LOCKER DOORS
○	OVERHEAD RECESSED LIGHT W/OUT SCREWS, SPEC 14.02	○	COUSE NECK CHART LIGHT, SPEC 14.08	○	SWITCH
□	EXTERIOR RECESSED LIGHT, SPEC (PER P&E)	○	COURTESY STEP LIGHTS (RED), SPEC 14.0	○	3-WAY SWITCH
□	OVERHEAD RECESSED ADJUST. LT. DEEP, SPEC 14.03	○	LOCKER LIGHT w/ MICRO SWITCH, SPEC 14.17	○	4-WAY SWITCH
□	OVERHEAD RECESSED ADJUST. LT. SHALLOW, SPEC 14.04	○	HALOGEN STRIP LIGHT, SPEC 14.17	○	AV KEYPAD ON WALL
□	UNDER CABINET LIGHT, SPEC 14.06	○	TELEPHONE JACK	○	COURTESY LIGHT SWITCH
□	PILOT HOUSE RED RECESSED LIGHT, SPEC 14.19	○	TV CABLE OUTLET	○	DIMMER SWITCH
○	OVERHEAD RECESSED LIGHT, WATERPROOF, SPEC 14.19	○	COMPUTER NETWORK JACK RJ45	○	SECURITY SWITCH
○	SPEAKER	○	FAX OUTLET	○	A.M. VOLUME SWITCH
○	WALL LIGHT 1, SPEC 14.09	○	DUPLEX OUTLET	○	GARBAGE DISPOSAL
○	WALL LIGHT 2, SPEC 14.15	○	SINGLE OUTLET	○	EXHAUST FAN
○	WALL SCONCE 1, SPEC 14.12	○	GFI OUTLET	○	
○	WALL SCONCE 2, SPEC 14.13	○	DOUBLE NARROW OUTLET	○	
○	WALL SCONCE 3, SPEC 14.10	○	THERMOSTAT	○	
○	BUNK LIGHT, SPEC 14.11	○	LETTER INDICATES LIGHTING CIRCUIT		

GENERAL NOTES:
 1. ALL REMOVABLE OVERHEAD PANELS TO BE FINISHED TO MATCH PLANS LOOK WITH 3/16" BEVEL EDGES PER APPROVED SHOP.
 2. FINAL OVERHEAD PANEL BREAKAWAYS DUE TO SOFFIT SIZES TBD PER AIR CONDITIONING SUPPLY.
 3. BUILDER RESPONSIBLE FOR DETERMINING NUMBER OF OUTLETS REQUIRED FOR EQUIPMENT.
 4. THERMOSTATS TO BE LOCATED IN CLOSETS.
 5. DO NOT LOCATE RECESSED HALOGEN OVERHEAD LIGHTS ABOVE DOORS IN LATCHED OPEN POSITIONS.
 6. PLEASE REVIEW ALL APPLIANCE SPECIFICATIONS AND REQUIREMENTS PRIOR TO CONSTRUCTION.
 7. FABRICATOR TO CONSULT WITH AUDIO AND VIDEO SPECIALISTS TO DETERMINE PLACEMENT AND POWER REQUIREMENTS PRIOR TO FABRICATION OF OUTLETS AND FABRICATION OF CABINETS.
 8. ANY DEVIATION OR SUBSTITUTION FROM INFORMATION PROVIDED HERE SHALL BE ALLOWED WITH THE PRIOR APPROVAL OF ARDEO DESIGN, INC.
 9. UNLESS OTHERWISE NOTED SWITCHES SHALL BE LOCATED WITH CENTERLINE AT 42" (TBD) ABOVE FINISHED FLOOR.
 10. BUILDER TO MOKUP, REVIEW AND APPROVE STAIRS CONFIGURATIONS.

NOTES:
 THIS DRAWING IS INTENDED TO CONVEY STYING DESIGN INTENT ONLY. BUILDER TO CREATE CONSTRUCTION SHOP DRAWING. IT IS BASED ON DIMENSIONAL INFORMATION PROVIDED BY PACIFIC ASIAN ENTERPRISES. PLEASE VERIFY ACTUAL CONDITIONS AND DIMENSIONS PRIOR TO FABRICATION OR INSTALLATION OF ANY INTERIOR COMPONENTS. ALL OF ARDEO DESIGN, INC. OR ANY SUBSTITUTIONS VARIANCE FROM CONDITIONS SHOWN.

THIS ARDEO DESIGN ELECTRONIC CAD DESIGN DRAWING IS INTENDED FOR THE ARCHITECT OR ARCHITECTS YACHT ONLY. IT IS THE PROPERTY OF ARDEO DESIGN, INC. AND MAY NOT BE REPRODUCED, IN WHOLE OR IN PART, WITHOUT THE EXPRESS WRITTEN CONSENT OF ARDEO DESIGN, INC.

BUILDER IS RESPONSIBLE FOR AIR CONDITIONING EQUIPMENT AND DUCTING LAYOUT, LOCATIONS, AND DIMENSIONS. BUILDER TO HAVE TYPED EQUIPMENT PRIOR TO FABRICATING ENTERTAINMENT CENTERS.

BUILDER TO HAVE APPLIANCES PRIOR TO LAYING OUT DALLEY CABINETS.

OVERHEAD & ELECTRICAL PLAN
 N6805 WILLIAMS 68 NORDHAVN
 Job/Hull No. NORDHAVN_6805
 CAD File N6801-ARDEOHPLAN.DWG
 Scale 1/2" = 1'-0"
 Date 05/09/06
 Sheet 6 of 9
 Rev. B

INTERIOR DESIGN
 FOR M.Y. SANS SOUJI II
 KEN & ROBERTA WILLIAMS

Ardeo DESIGN, INC.
 CUSTOM YACHT INTERIORS

No.	Date	Release / Revision
1	02/14/06	Initial release of Overhead & Electrical Plan - Lower deck areas
A	02/27/06	Second release of Overhead & Electrical Plan - Added Master Stateroom, Head
B	05/09/06	Third release of Overhead & Electrical Plan - Added Pilot House, Galley, Salon

STATUS	REV	DESCRIPTION	DATE	REV BY
1		INITIAL ISSUE	02/14/06	SL

THIS DRAWING IS AN INSTRUMENT OF THE PROPERTY OF ARDEO DESIGN, INC. AND MAY NOT BE REPRODUCED, IN WHOLE OR IN PART, WITHOUT THE EXPRESS WRITTEN CONSENT OF ARDEO DESIGN, INC.