

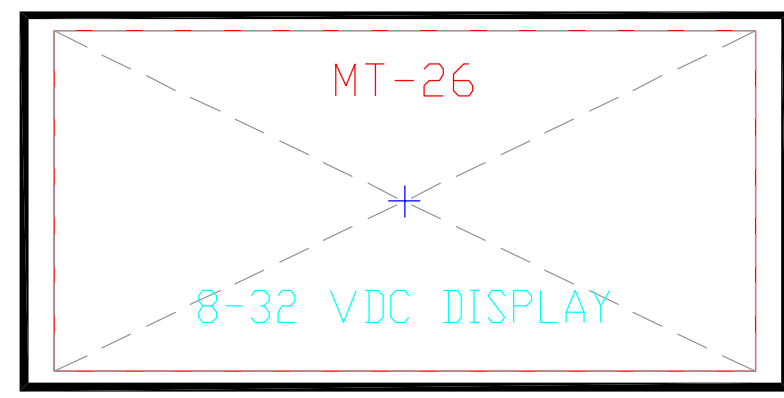
DESIGNED	M. SMITH	DATE	31 MAY 06
CHECKED		DATE	
APPROVED		DATE	

CAD FILE REF.	N6405-270-021-1.DWG
HULL #	HULL #05
PROJECT #	
DWG #	270-02 SH 1 OF 1 REV. #1

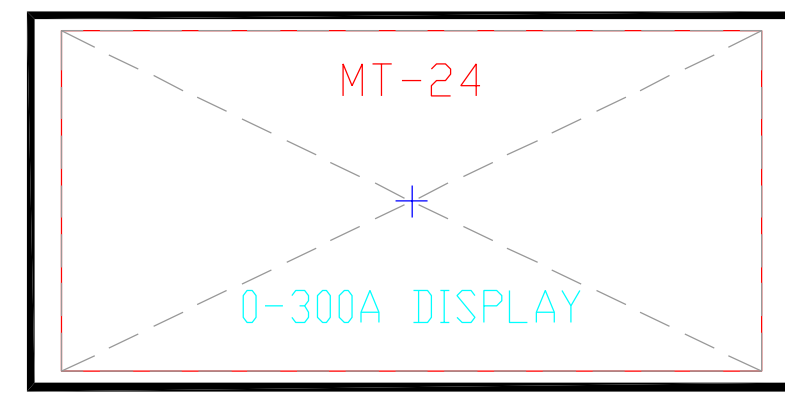
THIS PLAN REPRESENTS DETAILS AND DESIGN FEATURES AS ELEMENTS OF A DESIGN DEVELOPED BY BOAT SYSTEMS, INC. AND IS TO BE USED FOR WORK AUTHORIZED IN WRITING BY BOAT SYSTEMS, INC. ANY UNAUTHORIZED USE OR REPRODUCTION, IN PART OR IN WHOLE, WITHOUT THE WRITTEN PERMISSION OF BOAT SYSTEMS, INC. IS PROHIBITED. ALL RIGHTS OF INVENTION AND DESIGN ARE RESERVED BY BOAT SYSTEMS, INC. Copyright © Boat Systems, Inc., 2006

REVISIONS:	DATE:

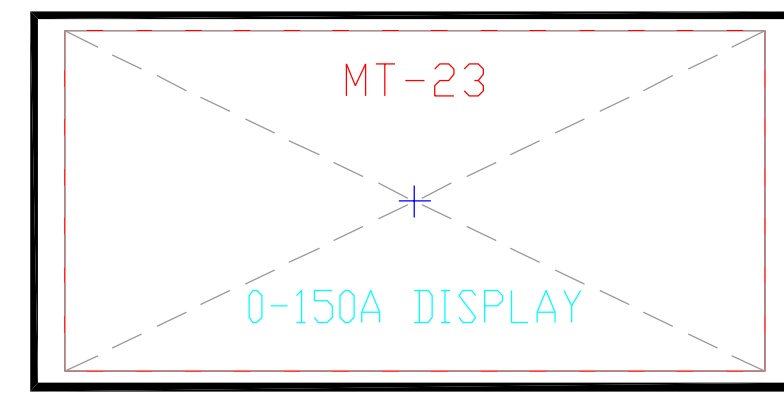
12/24VDC & 120VAC SERVICE PANEL



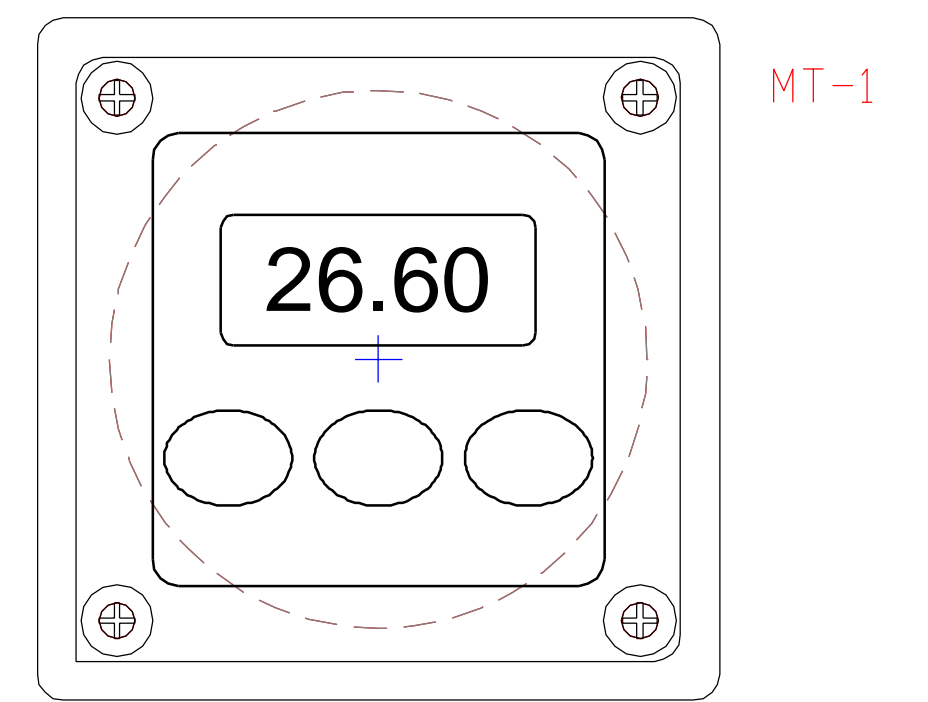
24 VOLT BATTERY BANK



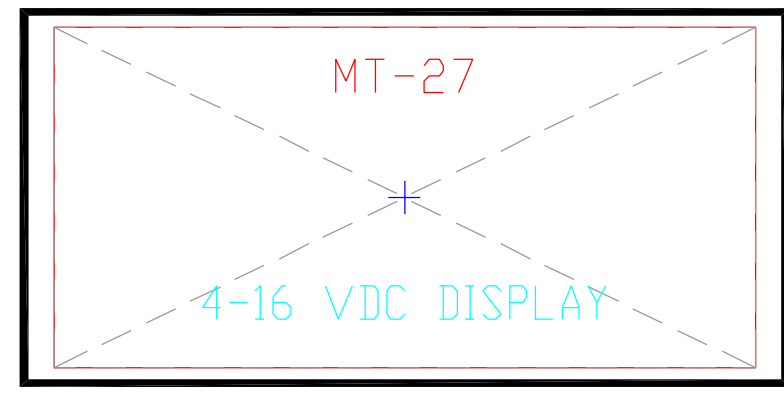
ALTERNATOR #1 OUTPUT



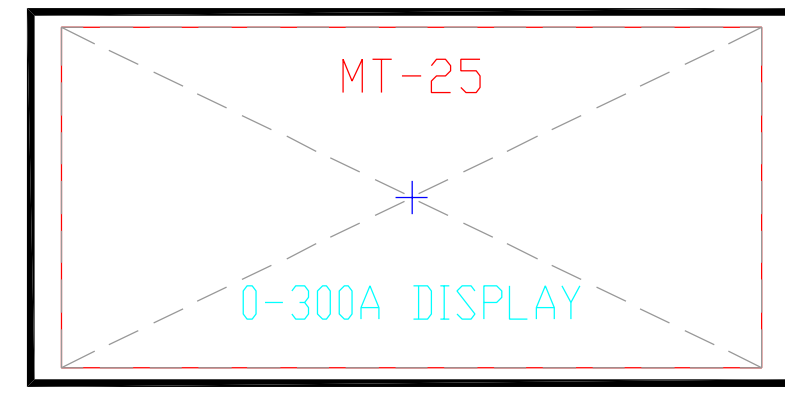
24 VOLT PANEL CURRENT



BATTERY MONITOR
CURRENT AND AMP-HR
CORRECTION FACTOR x2



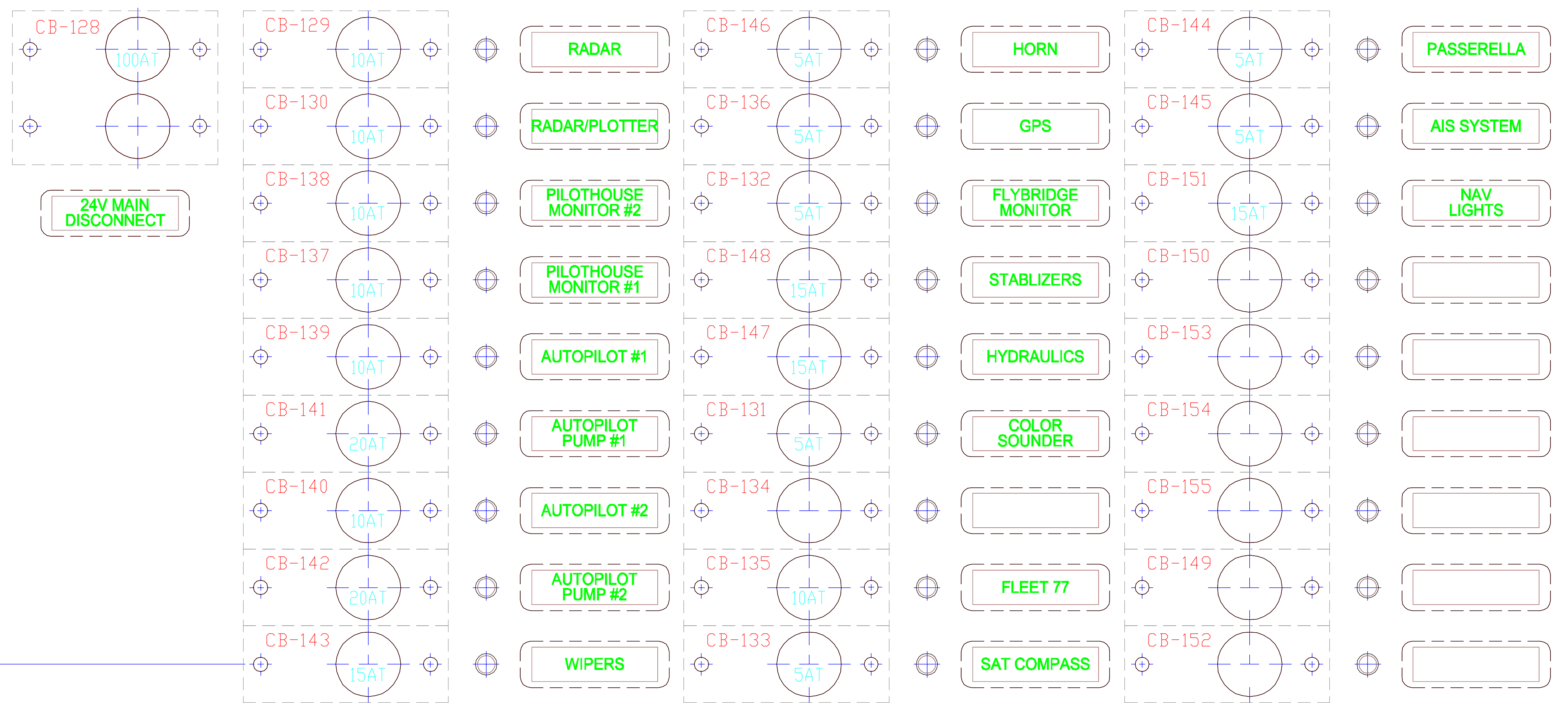
12 VOLT BATTERY BANK



ALTERNATOR #2 OUTPUT

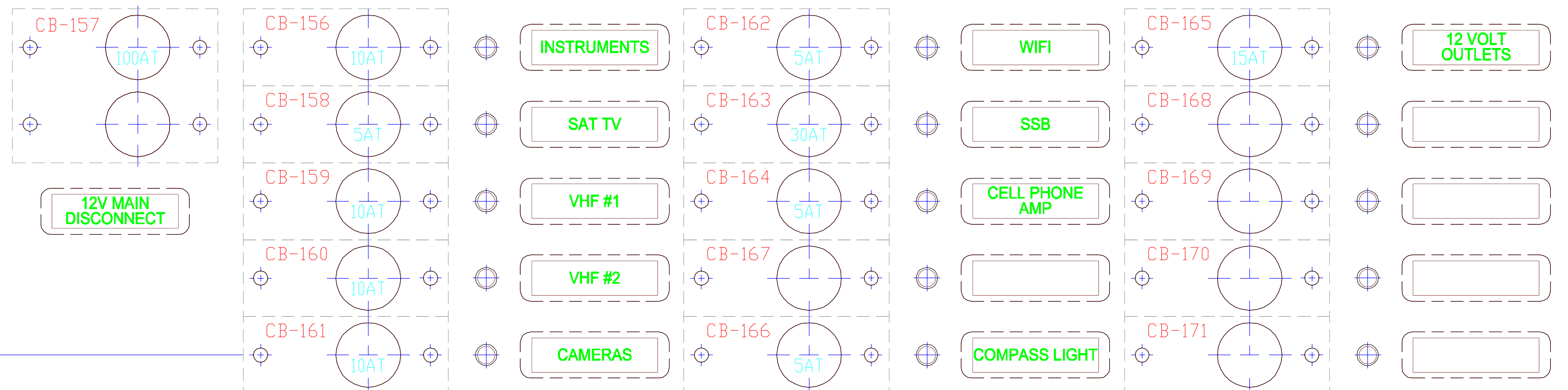
24VDC SERVICE

LT-145
DC POWER



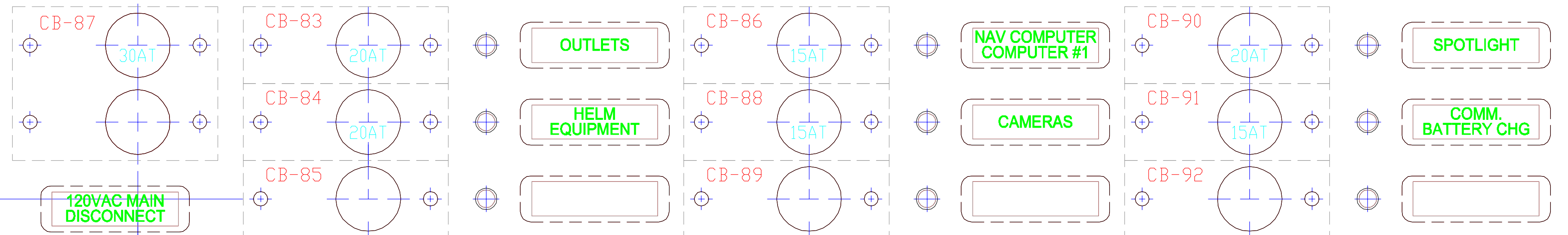
12VDC SERVICE

LT-174
DC POWER

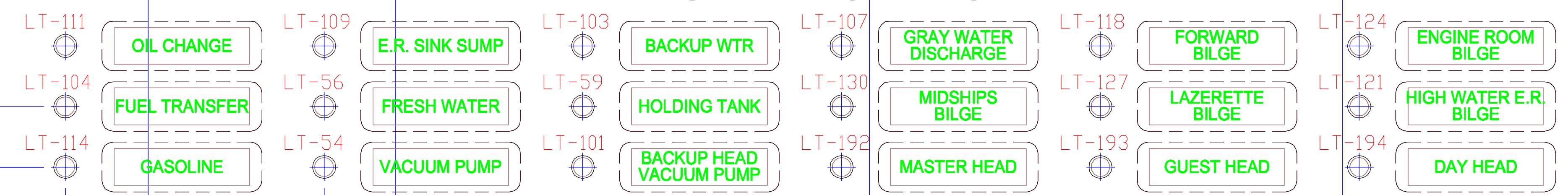


120VAC SERVICE

LT-82
AC POWER



PUMP MONITOR



12.625
7.563
4.00
0.55
1.65
1.75
2.50
2.35
2.25
4.30
4.30

Preliminary

17.50