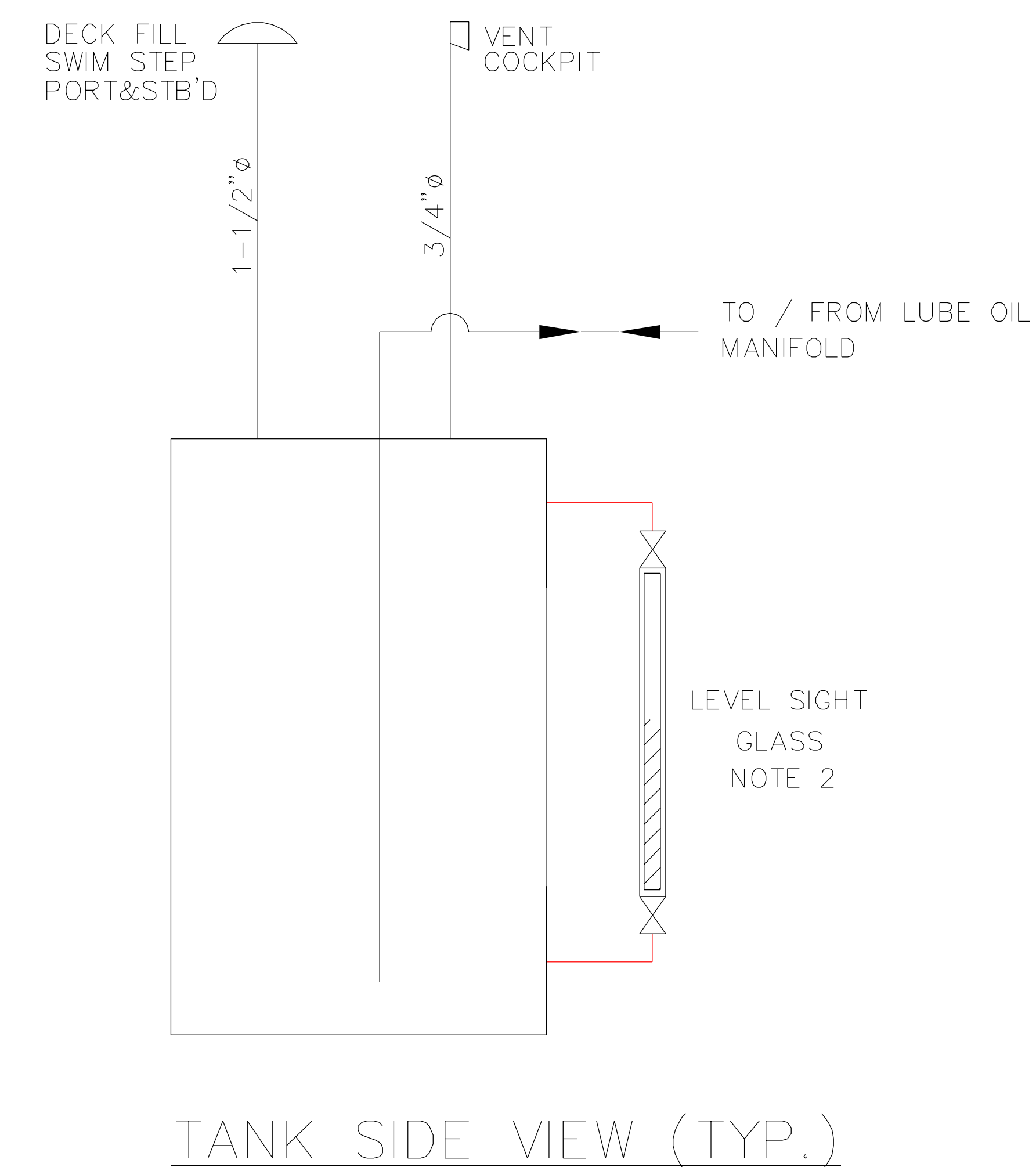
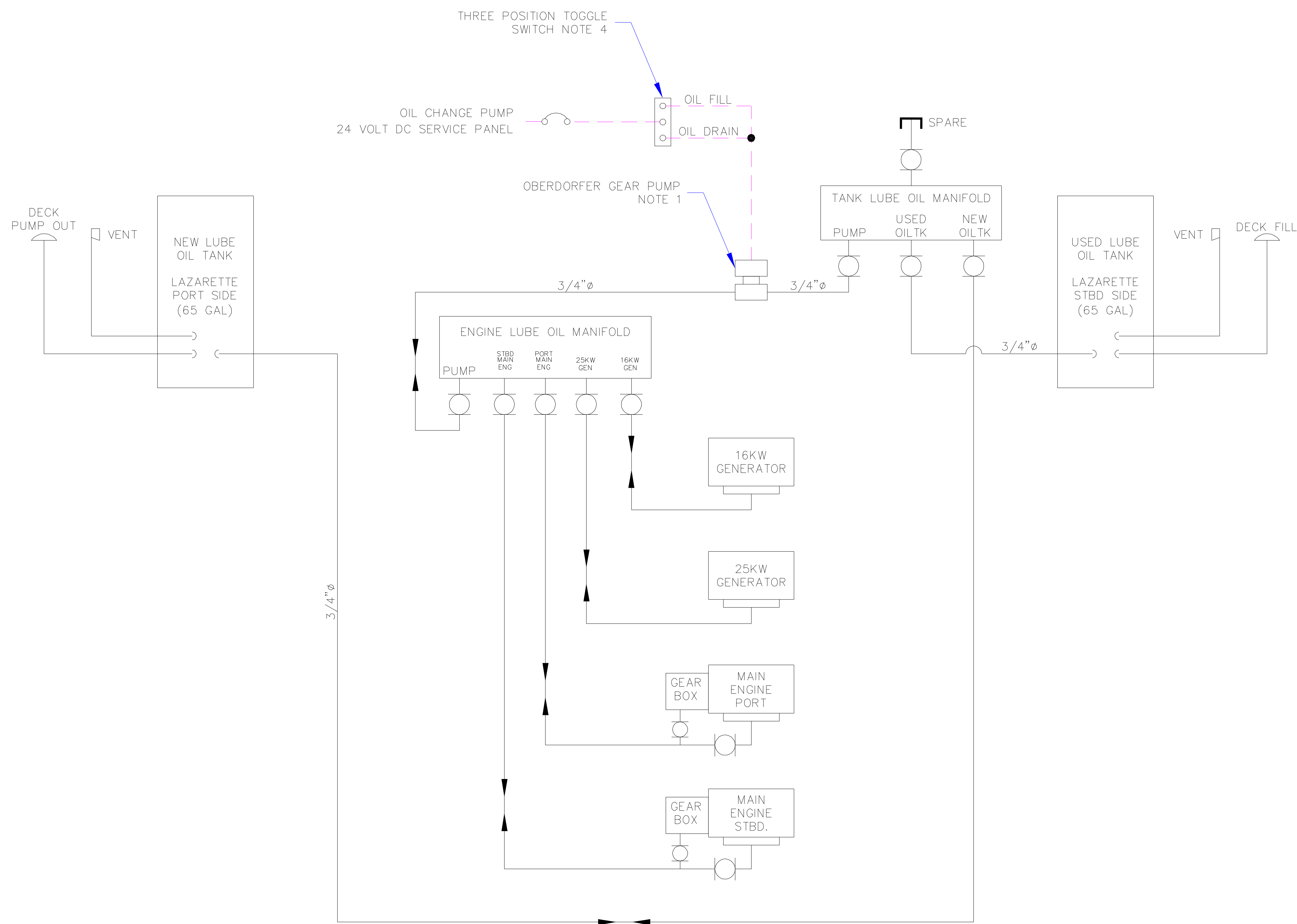


REVISIONS			
REV	DESCRIPTION	DATE	REV BY
0	INITIAL ISSUE		



NOTES:

- OBERDORFER REVERSIBLE FLOW GEAR PUMP MODEL #N993-N-F36-RC MOUNTED PORT SIDE OF MAIN ENGINE.
- TANK LEVEL SIGHT GLASS WITH INTEGRAL ISOLATION VALVES MOUNTED ON OIL TANKS, PORT AND STARBOARD SIDES, AFT END OF LAZARETTE.
- OIL MANIFOLDS ARE LOCATED ON ENGINE ROOM BULKHEAD PORT SIDE.
- START AND STOP OIL CHANGE PUMP USING THREE POSITION TOGGLE SWITCH. LEAVE SWITCH IN MID (STOP) POSITION. SWITCH IS LOCATED ON BULKHEAD (E/R) PORT SIDE.
- ALL LINES ARE 1/2" UNLESS OTHERWISE SPECIFIED.

NORDHAVN 68 USED OIL / NEW LUBE OIL SYSTEM

PACIFIC ASIAN ENTERPRISES

PO BOX 874, AT-THE HARBOR, DANA POINT, CALIFORNIA 92629
PH (949)496-4848 FAX (949)240-2398

SIZE B	PRJ. NO. N6805	DWG NO. N68UOS-6805	DWG. NM
-----------	-------------------	------------------------	------------

SCALE: NTS	DATE: SEE ABOVE	REV: SEE ABOVE	SHEET: 1 OF 1
------------	-----------------	----------------	---------------